



4118 South 500 West
Murray, Utah 84123
Phone 801.281.4911
Fax 801.281.4933

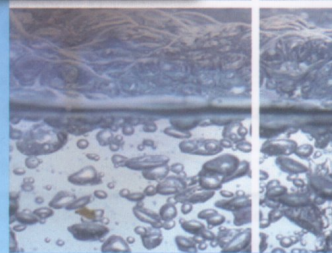
Commercial RO Systems BLS 3000-9000 Series

MODELS AVAILABLE

- BLS 3000 (3000 gpd/2.0 gpm*)
- BLS 6000 (6000 gpd/4.1 gpm*)
- BLS 9000 (9000 gpd/6.3 gpm*)

BLS 3000 - 9000 RO SYSTEMS

- ◆ Energy Saving, High Flow Membrane Elements
- ◆ Stainless Steel Membrane Pressure Vessels
- ◆ High Pressure Booster Pumps
- ◆ 230V, 60Hz, 1-Phase
- ◆ Automatic Feed Water Shut-Off Valve
- ◆ 20" BB Sediment 5-Micron Pre-Filter
- ◆ Low Inlet Pressure Protection Switch
- ◆ System Operating Pressure Gauge
- ◆ Storage Tank Float Control Connection
- ◆ Pre-Treatment Lockout Connection
- ◆ 12 Month (One Year) Limited Warranty



Choose From Three Feature Packages To Fit Your Application

ECONO MODEL FEATURES

- ◆ Mini-Trol WQ Microprocessor Based Controller
- ◆ Fixed Reject Water Control (50%)
- ◆ Manual Membrane Flush
- ◆ Reject Water Recirculation Loop
- ◆ Pre-Treatment Lockout Connection

STANDARD MODEL FEATURES

- ◆ S-150 Microprocessor Based Controller
- ◆ Inlet & Outlet Pre-Filter Gauges
- ◆ Adjustable Reject Water Control Valve
- ◆ Product & Reject Water Flow Meters
- ◆ Manual Membrane Flush
- ◆ Product Water Check Valve
- ◆ Reject Water Recirculation Loop
- ◆ Pre-Treatment Lockout Connection

OPTIMUM MODEL FEATURES

- ◆ S-150 Microprocessor Based Controller
- ◆ Inlet & Outlet Pre-Filter Gauges
- ◆ Adjustable Reject Water Control Valve
- ◆ Product & Reject Water Flow Meters
- ◆ Automatic Membrane Flush
- ◆ Manual Feed Water Shut-Off Valve
- ◆ Post-Membrane Pressure Gauge
- ◆ Product Water Check Valve
- ◆ Reject Water Recirculation Loop
- ◆ Pre-Treatment Lockout Connection

Additional features available: Stainless Steel Pump and/or Frame, CIP (Clean-In-Place) Connection Ports, Product Water Pressure Switch with Relief Valve, 220V/50Hz/1-Phase, and others upon request.

** System production may vary depending upon incoming water temperature and chemistry. Based on feed water with 500 mg/L NaCl and temperature of 25°C. (77°F).*

Commercial RO Systems

BLS 3000-9000 Series



4118 South 500 West
Murray, Utah 84123
Phone 801.281.4911
Fax 801.281.4933

BLS 3000 - 9000 DESIGN SPECIFICATIONS & FEED WATER PARAMETERS

| | BLS 3000 | BLS 6000 | BLS 9000 |
|---|----------------------|----------------------|----------------------|
| Flow Capacity* | 3000 GPD / 2.0 GPM | 6000 GPD / 4.1 GPM | 9000 GPD / 6.3 GPM |
| Typical Recovery | 70% | 70% | 70% |
| Design Rejection | 95% - 99% | 95% - 99% | 95% - 99% |
| Number of Vessels | (1) 4" x 40" S.S. | (2) 4" x 40" S.S. | (3) 4" x 40" S.S. |
| Number of Membrane Elements | (1) 4" x 40" Hi-Flow | (2) 4" x 40" Hi-Flow | (3) 4" x 40" Hi-Flow |
| Typical Operating Pressure | 165 PSI | 165 PSI | 165 PSI |
| Nominal Feed Water Flow During Operation | 3.15 GPM | 6.30 GPM | 9.45 GPM |
| Nominal Feed Water Flow During Sys. Flush | 10 GPM | 13 GPM | 16 GPM |
| Temperature Range | 40-90°F (5-30°C) | 40-90°F (5-30°C) | 40-90°F (5-30°C) |
| Minimum Feed Water Pressure | 20 PSI @ 10 GPM | 20 PSI @ 13 GPM | 35 PSI @ 16 GPM |
| Maximum Feed Water Pressure | 85 PSI | 85 PSI | 85 PSI |
| Maximum Feed Water TDS | 2,000 PPM | 2,000 PPM | 2,000 PPM |
| Maximum Chlorine Tolerance | 0.1 PPM | 0.1 PPM | 0.1 PPM |
| Maximum Hardness | 10 GPG | 10 GPG | 10 GPG |
| Maximum Iron | 0.5 PPM (Dissolved) | 0.5 PPM (Dissolved) | 0.5 PPM (Dissolved) |
| Maximum Oil Tolerance | 0.0 mg/l | 0.0 mg/l | 0.0 mg/l |
| Maximum Feed Water Silt Index | 5 | 5 | 5 |
| Maximum Feed Water Turbidity | 1 NTU | 1 NTU | 1 NTU |
| Maximum Product Water Back Pressure | 50 PSI | 50 PSI | 50 PSI |
| pH Range | 3 - 10 | 3 - 10 | 3 - 10 |
| Minimum Pre-Filtration | 5 Micron | 5 Micron | 5 Micron |

* System production may vary depending upon incoming water temperature and chemistry. Based on feed water with 500 mg/L NaCl and temperature of 25°C. (77°F).
NOTE! If the R.O. system is used with chlorinated water, a carbon filter is required. BLS Systems are designed for use on potable water sources only.

BLS 3000 - 9000 DIMENSIONS & SERVICE CONNECTIONS

| | BLS 3000 | BLS 6000 | BLS 9000 |
|--------------------------|-----------------|-----------------|-----------------|
| Depth | 21" | 21" | 21" |
| Width | 25" | 25" | 25" |
| Height | 60" | 60" | 60" |
| Weight | 200 Lbs. | 250 Lbs. | 300 Lbs. |
| Feed Water Inlet | 3/4" | 3/4" | 3/4" |
| Reject Water To Drain | 1/2" | 1/2" | 1/2" |
| Product Water To Storage | 1/2" | 1/2" | 1/2" |

BLS 3000 - 9000 DESIGN SPECIFICATIONS

| Model | Production GPD/LPD* | Oper. Press. | Filter Housing | Membrane Element | Pump / Motor | |
|----------|------------------------|-----------------|-------------------|---------------------|------------------------|-------------------------|
| | | | | | 60 Hz | 50 Hz |
| BLS 3000 | 3000 / 11355 | 165 PSI | 20" BB | 4x40 (1) | HP Booster #3060712 | HP Booster #30607125 |
| BLS 6000 | 6000 / 22710 | 165 PSI | 20" BB | 4x40 (2) | HP Booster #3060720 | HP Booster #30607205 |
| BLS 9000 | 9000 / 34065 | 165 PSI | 20" BB | 4x40 (3) | HP Booster #3060722 | HP Booster #30607205 |

BLS 3000 to 9000 TEST CONDITIONS

OPERATING PRESSURE: 165 PSI
FEED WATER TDS: 500 PPM as NaCl
DESIGN TEMPERATURE: 77°F (25°C)
MEMBRANE: Energy Saving High Flow Composite Polyamide
DESIGN RECOVERY: 70%